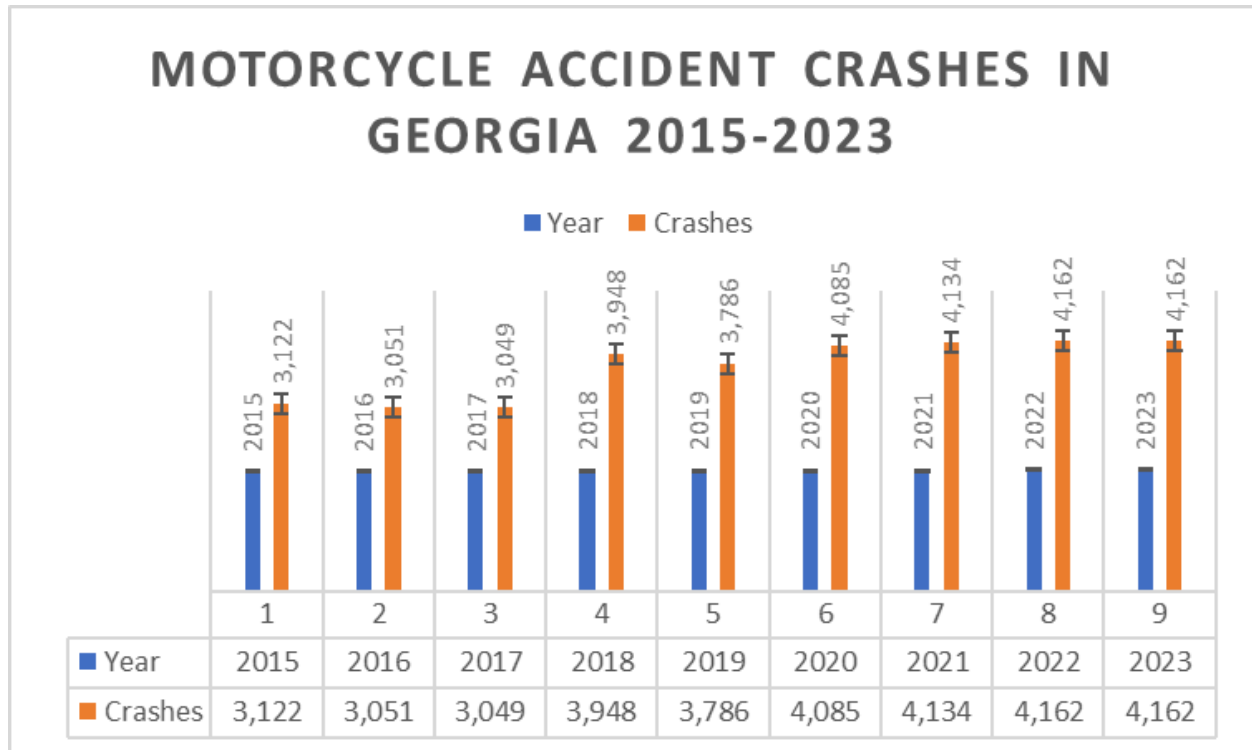


Motorcycle Accidents and Fatalities in Georgia: A Decade in Review (2015–2024).



Atlanta GA, 15/08/2024.

From 2015 - 2023, more than **33,499** motorcycle accidents that resulted in **1,604 fatalities** have been recorded according to research conducted by Atlanta personal injury law firm - [Wetherington Law Firm](#). The report shows a continuous rise in motorcycle accidents in Atlanta and other parts of Georgia year by year despite all efforts to contain the number of deaths that result from motorcycle accidents.

Key points from the report include:

2015 Georgia Motorcycle Accident Report Summary

2015: Here is a summary of the 2015 motorcycle accident report in Georgia:

Overall Statistics:

- **Motorcyclist Fatalities in Georgia:** In 2015, Georgia reported 131 motorcyclist fatalities, a 6% decrease from 140 deaths in 2014.
- **Motorcyclist Fatalities as a Percentage of Total Traffic Deaths:** Motorcyclists represented 12% of the total traffic fatalities in Georgia in 2015.

National Context:

- **National Increase in Fatalities:** Across the U.S., motorcyclist fatalities were expected to increase by 10% in 2015 compared to 2014, with an estimated total of 5,010 fatalities.
- **Georgia's Ranking:** Georgia was among the states that saw a decrease in motorcyclist fatalities in 2015, contrasting with the national trend.

Demographics:

- **Gender:** The report highlights that over 90% of motorcyclist fatalities nationally were male, which is likely consistent with Georgia's data, though specific gender breakdowns for Georgia were not provided.
- **Age:** The report identifies motorcyclists aged 20-29 and 40-49 as significant age groups involved in fatalities.

2016 Georgia Motorcycle Accident Report Summary

Here's a detailed analysis of the 2016 Georgia Motorcycle Accident Report:

1. Overall Statistics

- In 2016, Georgia recorded 3,122 motorcycle-related traffic crashes, marking a slight increase compared to previous years.
- Motorcycle-related fatalities accounted for 12% of all traffic fatalities, with 171 motorcyclist fatalities reported in 2016.
- Motorcycles represented 2% of registered vehicles in Georgia but accounted for a disproportionately high 22% of all driver fatalities, indicating a higher risk associated with motorcycling.

2. Fatalities Increase

- Motorcyclist fatalities increased by 9%, from 157 in 2015 to 171 in 2016, reflecting a concerning rise in motorcycle-related deaths.
- The fatality rate per 100,000 motorcycle registrations increased from 78.2 in 2015 to 84.0 in 2016, highlighting a growing risk for motorcyclists.
- This increase in fatalities occurred despite efforts to improve motorcycle safety, underscoring the persistent dangers faced by motorcyclists on Georgia roads.

3. Contributing Factors

- The most common contributing factors in motorcycle crashes were speeding, losing control, and following too closely.
- Speeding was involved in 31% of fatal motorcycle crashes, while alcohol impairment was confirmed or suspected in 13% of all fatal crashes.
- Other significant contributing factors included aggressive driving and failure to yield, which were particularly prevalent in multi-vehicle crashes.

4. Single Vehicle Crashes

- Single-vehicle crashes made up 38% of all motorcycle crashes in 2016, often due to the motorcycle overturning or the rider losing control.
- Most of these single-vehicle crashes involved the rider losing control, highlighting the need for improved training and road safety awareness.
- Single-vehicle crashes were more common in rural areas, where road conditions might be more challenging.

5. Speeding Statistics

- Speeding was a factor in 31% of all fatal motorcycle crashes, a higher percentage than the 19% involvement rate for all motor vehicle crashes.
- Speeding-related crashes were more likely to result in fatalities, with 31% of motorcyclists involved in fatal crashes being reported as speeding at the time of the crash.
- The prevalence of speeding among younger motorcyclists, particularly those aged 25-34 years, contributed to higher fatality rates in this age group.

6. Demographics

- Male motorcyclists accounted for 93% of those involved in crashes, with female motorcyclists and passengers representing a smaller proportion of the overall numbers.
- Motorcyclists aged 25-34 years had the highest involvement in crashes, accounting for 30% of all motorcycle crashes and 27% of operator fatalities.
- The age group 35-44 years also showed a significant risk, representing 24% of motorcycle-related fatalities.

7. Seasonal and Timing Analysis

- Motorcycle crashes were most frequent during the warmer months of Spring and Summer, with a notable increase during weekends, especially at night.

- 34% of all motorcycle fatal crashes occurred during the Fall, with many incidents happening during weekend nights, reflecting a higher risk during leisure periods.
- Most crashes (73%) occurred during daylight hours, but a significant proportion of fatal crashes (40%) occurred at night.

8. Manner of Collision

- The most common manner of collision in motorcycle crashes was rear-end collisions, accounting for 29% of multi-vehicle crashes.
- Left-angle crashes were the second most common, making up 22% of multi-vehicle collisions.
- In single-vehicle crashes, overturning due to loss of control was the most frequent type of incident, emphasizing the need for better handling and control by motorcyclists.

9. Crash Locations

- The Atlanta region had the highest concentration of motorcycle crashes, accounting for 41% of all motorcycle-related crashes in the state.
- Rural areas showed a lower overall number of crashes but a higher rate per 100,000 registrations, with particularly high rates in the northeast Georgia-Tennessee border area.
- The highest crash rates were observed in counties with high traffic density and complex road networks, such as Fulton and DeKalb counties.

10. Economic Impact

- The economic impact of motorcycle-related hospitalizations and emergency room visits in Georgia was significant, with costs exceeding \$195 million in 2016.
- Hospitalizations and emergency room visits were highest among motorcyclists aged 25-34 years, who accounted for 29% of ER visits and 27% of hospitalizations.
- Helmet use among motorcyclists resulted in an estimated 88 lives saved, highlighting the critical importance of wearing helmets.

11. Year-to-Year Comparisons

- From 2015 to 2016, motorcyclist fatalities increased by 9%, reflecting a troubling rise in motorcycle-related deaths.
- The fatality rate per 100,000 motorcycle registrations increased slightly from 78.2 in 2015 to 84.0 in 2016.
- Motorcycle registrations remained relatively stable, with minor fluctuations, indicating consistent motorcycling activity in the state.

- The number of speed-related crashes involving motorcyclists remained high, with speeding contributing to 31% of fatal crashes in both 2015 and 2016.
- Helmet use continued to be a critical factor in reducing fatalities, with helmeted motorcyclists representing a significant portion of those who survived crashes.

2017 Georgia Motorcycle Accident Report Summary

1. Overall Statistics

- In 2017, Georgia recorded 3,051 motorcycle-related traffic crashes, which was consistent with the number of crashes in previous years.
- Motorcycle-related fatalities accounted for 11% of all traffic fatalities, with 165 motorcyclist fatalities reported in 2017.
- Motorcycles represented 2% of registered vehicles in Georgia but accounted for a disproportionately high 21% of all driver fatalities.

2. Fatalities Increase

- Motorcyclist fatalities decreased slightly from 171 in 2016 to 165 in 2017, reflecting a 3.5% reduction.
- The fatality rate per 100,000 motorcycle registrations decreased from 84.0 in 2016 to 80.9 in 2017, indicating a small improvement in motorcycle safety.
- Despite this decrease, motorcyclists remained one of the most vulnerable groups on Georgia's roads.

3. Contributing Factors

- The most common contributing factors in motorcycle crashes were speeding, loss of control, and following too closely.
- Speeding was involved in 31% of fatal motorcycle crashes, while alcohol impairment was confirmed or suspected in 12% of all fatal crashes.
- Other significant contributing factors included aggressive driving and failure to yield, particularly in multi-vehicle crashes.

4. Single Vehicle Crashes

- Single-vehicle crashes made up 39% of all motorcycle crashes in 2017, often due to the motorcycle overturning or the rider losing control.
- The majority of these single-vehicle crashes involved the rider losing control, highlighting the need for improved rider training and road safety awareness.
- Single-vehicle crashes were more common in rural areas, where road conditions might be more challenging.

5. Speeding Statistics

- Speeding was a factor in 31% of all fatal motorcycle crashes, a higher percentage than the 18% involvement rate for all motor vehicle crashes.
- Speeding-related crashes were more likely to result in fatalities, with 31% of motorcyclists involved in fatal crashes being reported as speeding at the time of the crash.
- The prevalence of speeding among younger motorcyclists, particularly those aged 25-34 years, contributed to higher fatality rates in this age group.

6. Demographics

- Male motorcyclists accounted for 92% of those involved in crashes, with female motorcyclists and passengers representing a smaller proportion of the overall numbers.
- Motorcyclists aged 25-34 years had the highest involvement in crashes, accounting for 29% of all motorcycle crashes and 26% of operator fatalities.
- The age group 35-44 years also showed a significant risk, representing 24% of motorcycle-related fatalities.

7. Seasonal and Timing Analysis

- Motorcycle crashes were most frequent during the warmer months of Spring and Summer, with a notable increase during weekends, especially at night.
- 35% of all motorcycle fatal crashes occurred during the Fall, with many incidents happening during weekend nights, reflecting a higher risk during leisure periods.
- The majority of crashes (70%) occurred during daylight hours, but a significant proportion of fatal crashes (38%) occurred at night.

8. Manner of Collision

- The most common manner of collision in motorcycle crashes was rear-end collisions, accounting for 30% of multi-vehicle crashes.
- Left-angle crashes were the second most common, making up 22% of multi-vehicle collisions.
- In single-vehicle crashes, overturning due to loss of control was the most frequent type of incident, emphasizing the need for better handling and control by motorcyclists.

9. Crash Locations

- The Atlanta region had the highest concentration of motorcycle crashes, accounting for 40% of all motorcycle-related crashes in the state.
- Rural areas showed a lower overall number of crashes but a higher rate per 100,000 registrations, with particularly high rates in the northeast Georgia-Tennessee border area.

- The highest crash rates were observed in counties with high traffic density and complex road networks, such as Fulton and DeKalb counties.

10. Economic Impact

- The economic impact of motorcycle-related hospitalizations and emergency room visits in Georgia was significant, with costs exceeding \$200 million in 2017.
- Hospitalizations and emergency room visits were highest among motorcyclists aged 25-34 years, who accounted for 28% of ER visits and 26% of hospitalizations.
- Helmet use among motorcyclists resulted in an estimated 89 lives saved, highlighting the critical importance of wearing helmets.

11. Year-to-Year Comparisons

- From 2016 to 2017, motorcyclist fatalities decreased by 3.5%, reflecting a modest improvement in motorcycle safety.
- The fatality rate per 100,000 motorcycle registrations decreased slightly from 84.0 in 2016 to 80.9 in 2017.
- Motorcycle registrations remained relatively stable, with minor fluctuations, indicating consistent motorcycling activity in the state.
- The number of speed-related crashes involving motorcyclists remained high, with speeding contributing to 31% of fatal crashes in both 2016 and 2017.
- Helmet use continued to be a critical factor in reducing fatalities, with helmeted motorcyclists representing a significant portion of those who survived crashes.

2018 Georgia Motorcycle Accident Report Summary

1. Overall Statistics

- In 2018, Georgia recorded 3,049 motorcycle-related traffic crashes, a slight increase from previous years.
- Motorcycle-related fatalities accounted for 11% of all traffic deaths, with 154 motorcyclist fatalities.
- Motorcycles represented 2% of registered vehicles but accounted for 21% of all driver fatalities.

2. Fatalities Decrease

- Motorcyclist fatalities decreased by 7% from 165 in 2017 to 154 in 2018.
- The fatality rate per 100,000 motorcycle registrations decreased from 80.9 to 75.6, indicating a modest safety improvement.

3. Contributing Factors

- Common factors in crashes included speeding (31%), loss of control, and following too closely.
- Alcohol impairment was involved in 10% of fatal crashes, with aggressive driving and failure to yield also significant in multi-vehicle crashes.

4. Single-Vehicle Crashes

- Single-vehicle crashes accounted for 40% of all motorcycle incidents, often due to the motorcycle overturning or the rider losing control.
- These crashes were more common in rural areas, where road conditions can be more challenging.

5. Speeding Statistics

- Speeding was a factor in 31% of fatal motorcycle crashes, higher than the 18% rate for all motor vehicles.
- Speeding-related crashes were more likely to be fatal, particularly among younger motorcyclists aged 25-34 years.

6. Demographics

- Male motorcyclists accounted for 91% of crashes, with motorcyclists aged 25-34 years being the most involved.
- The 35-44 age group also showed significant risk, representing 23% of fatalities.

7. Seasonal and Timing Analysis

- Crashes were most frequent in Spring and Summer, with an increase during weekends, especially at night.
- 33% of fatal crashes occurred in Fall, with 41% of these at night, reflecting higher risk during leisure periods.

8. Manner of Collision

- Rear-end collisions were the most common in multi-vehicle crashes (32%), followed by left-angle crashes (21%).
- In single-vehicle crashes, loss of control leading to overturning was most frequent, highlighting the need for better handling and control.

9. Crash Locations

- The Atlanta region had the highest concentration of crashes, accounting for 43% of all motorcycle incidents.

- Rural areas showed fewer crashes but higher rates per 100,000 registrations, with particularly high rates in northeast Georgia.

10. Economic Impact

- The economic impact of motorcycle-related hospitalizations and ER visits exceeded \$210 million.
- The highest costs were among motorcyclists aged 25-34 years, who accounted for 27% of ER visits and 25% of hospitalizations.
- Helmet use saved an estimated 87 lives, emphasizing its importance.

Year-to-Year Comparisons

- Motorcyclist fatalities decreased by 7% from 2017 to 2018, indicating improved safety.
- The fatality rate per 100,000 registrations decreased from 80.9 to 75.6.
- Speed-related crashes remained high, contributing to 31% of fatalities in both years.
- Helmet use continued to be crucial in reducing fatalities, with helmeted riders representing a significant portion of survivors.

2019 Georgia Motorcycle Accident Report Summary

1. Overall Statistics

- In 2019, there were 3,948 motorcycle-related traffic crashes in Georgia, a 30% increase from 2018's 3,049 crashes.
- Motorcycles accounted for 11% of all traffic fatalities, with 170 motorcyclist fatalities.
- Although motorcycles represented only 2% of registered vehicles, they accounted for 21% of driver fatalities, underscoring the high risk associated with motorcycling.

2. Fatalities Increase

- Motorcyclist fatalities rose by 10%, from 154 in 2018 to 170 in 2019, despite a slight decline in registrations (from 203,639 to 203,343).
- The fatality rate per 100,000 motorcycle registrations increased by 11%, from 75.6 to 83.6.

3. Contributing Factors

- Key contributing factors included losing control (53% of crashes), speeding (31% of fatal crashes), and following too closely.
- Alcohol impairment was involved in 12% of fatal crashes, with other factors such as erratic driving and failure to yield also being significant.

4. Single-Vehicle Crashes

- Single-vehicle crashes accounted for 37% of all motorcycle incidents, often involving the motorcycle overturning.
- Of these single-vehicle crashes, 53% involved the operator losing control.

5. Speeding Statistics

- Speeding was a factor in 31% of fatal motorcycle crashes, compared to 18% for all vehicles.
- 18% of motorcyclists involved in fatal crashes were speeding, with the 25-34 age group being the most affected, representing 30% of speed-related crashes.

6. Demographics

- Male motorcyclists accounted for 88% of crashes, while 51% of operators involved in crashes lacked a valid motorcycle license.
- The 25-34 age group had the highest involvement in crashes, representing 25% of crashes and 23% of fatalities.

7. Seasonal and Timing Analysis

- 33% of fatal crashes occurred in the Fall, with a significant number during weekend nights.
- 70% of crashes occurred during daylight, with 41% of fatal crashes happening at night.

8. Manner of Collision

- Rear-end collisions were the most common in multi-vehicle crashes (32%), followed by left-angle crashes (20%) and head-on collisions (8%).
- In single-vehicle crashes, overturning due to loss of control was the most frequent incident (53%).

9. Crash Locations

- The Atlanta Region accounted for 42% of motorcycle crashes, with a crash rate of 2,449.9 per 100,000 registrations.
- Rural counties had a lower overall crash rate but higher rates in certain areas, such as the northeast Georgia-Tennessee border.

10. Economic Impact

- The total cost of motorcycle-related hospitalizations and emergency room visits in Georgia was \$221 million in 2019.

- The highest costs were among motorcyclists aged 25-34, who accounted for 27% of ER visits and 24% of hospitalizations.
- Helmet use saved an estimated 91 lives, with helmeted motorcyclists representing 88% of all fatalities.

11. Year-to-Year Comparisons

- From 2010 to 2019, motorcyclist fatalities in Georgia increased by 33%, from 128 in 2010 to 170 in 2019.
- The fatality rate per 100,000 motorcycle registrations rose by 28%, from 65.4 to 83.6.
- Motorcycle registrations increased by 4%, from 195,647 in 2010 to 203,343 in 2019.
- Speed-related crashes have consistently increased, with speeding contributing to 31% of fatal crashes in 2019.
- Helmet use remained high, with 88% of fatally injured motorcyclists reported wearing helmets, compared to 59% nationwide.

2020 Georgia Motorcycle Accident Report Summary

1. Overall Statistics

- In 2020, Georgia had 3,786 motorcycle-related traffic crashes, a 4% decrease from 2019's 3,948.
- Despite fewer crashes, fatalities increased by 5%, from 170 in 2019 to 179 in 2020.
- Motorcycles, though only 2% of registered vehicles, accounted for 12% of traffic fatalities.

2. Fatalities Increase

- Fatalities rose by 13%, from 170 in 2019 to 192 in 2020, alongside a 2% increase in registrations (from 203,343 to 206,834).
- The fatality rate per 100,000 registrations increased by 11%, from 83.6 to 92.8.

3. Contributing Factors

- Loss of control was the leading cause in single-vehicle crashes, with 53% of operators losing control before the crash.
- Speeding was involved in 31% of fatal crashes, while alcohol impairment was confirmed or suspected in less than 5% of all motorcycle crashes.
- Other key factors included following too closely (15%) and risky driving (12%).

4. Single-Vehicle Crashes

- Single-vehicle incidents made up 40% of all crashes, often due to overturning.

- In these, 53% involved the rider losing control, emphasizing the need for better rider training.

5. Speeding Statistics

- Speeding was involved in 31% of fatal crashes, compared to 16% of serious injury crashes and 12% of all crashes.
- Motorcycle operators aged 25-34 were most likely to be involved in speed-related crashes.

6. Demographics

- Male motorcyclists made up 92% of crashes, with 81% of EMS-transported motorcyclists being male.
- White, non-Hispanic motorcyclists accounted for 64% of fatalities, 59% of hospital visits, and 63% of emergency room visits.
- The 25-34 age group had the highest involvement in crashes.

7. Seasonal and Timing Analysis

- 33% of fatal crashes occurred in the Fall, with a rise in nighttime crashes on weekends.
- 45% of fatal crashes occurred in dark conditions, while 71% of all crashes happened during daylight.

8. Manner of Collision

- Angle crashes were the most common in multi-vehicle incidents, making up 61% of fatal crashes.
- Rear-end collisions accounted for 16% of fatalities, while head-on collisions made up 9%.
- Overturning due to loss of control was the most common in single-vehicle crashes.

9. Crash Locations

- The Atlanta Region saw 37% of all motorcycle crashes, with a crash rate of 2,059.6 per 100,000 motorcycle registrations.
- Rural counties had a crash rate of 1,562.9 per 100,000 registrations, while urban areas outside of Atlanta had a rate of 1,819.7.
- Lumpkin County had the highest serious injury and fatal crash rates, at 4,357.0 per 100,000 registrations.

10. Economic Impact

- The total cost of motorcycle-related hospitalizations and ER visits in Georgia was \$230.5 million in 2020.
- Hospitalizations increased by 9% compared to 2019, while ER visits decreased by 3%.
- Helmet use saved an estimated 103 lives.

11. Year-to-Year Comparisons

- From 2011 to 2020, motorcyclist fatalities in Georgia increased by 65%, from 116 in 2013 to 192 in 2020.
- The fatality rate per 100,000 registrations rose by 55%, from 58.2 in 2013 to 92.8 in 2020.
- Registrations increased gradually from 199,253 in 2011 to 206,834 in 2020.
- Serious injuries increased by 18%, and hospitalizations due to motorcycle crashes rose by 9% from 2019 to 2020.
- Speeding's role in fatal crashes grew significantly, with speeding contributing to 31% of fatal crashes in 2020, compared to 22% in 2017.
- Helmet use remained high, with 87% of fatally injured motorcyclists reported wearing helmets in 2020, higher than the national average of 57%.

2021 Georgia Motorcycle Accident Report Summary

1. Overall Statistics

- In 2021, Georgia recorded 4,085 motorcycle-related traffic crashes, an 8% increase from 2020's 3,786.
- Motorcycles made up 1% of all vehicle crashes but represented 11% of traffic fatalities, with 194 fatalities.
- Although only 2% of registered vehicles, motorcycles accounted for 15% of driver fatalities.

2. Fatalities Increase

- Fatalities increased by 1% from 192 in 2020 to 194 in 2021, despite a 3% increase in registrations (from 206,834 to 212,788).
- The fatality rate per 100,000 registrations decreased by 2%, from 92.8 in 2020 to 91.2 in 2021.

3. Contributing Factors

- 62% of motorcycle operators in single-vehicle crashes lost control before the crash.
- Speeding contributed to 28% of fatal crashes, and alcohol impairment was a factor in 5%.
- Following too closely and risky/aggressive driving contributed to 34% and 25% of multi-vehicle crashes, respectively.

4. Single-Vehicle Crashes

- Single-vehicle crashes accounted for 37% of all motorcycle incidents, with 62% of these involving loss of control.
- Single-vehicle crashes were more common in rural areas.

5. Speeding Statistics

- Speeding was a factor in 28% of fatal motorcycle crashes, compared to 12% of serious injury crashes and 11% of all crashes.
- 23% of motorcyclists involved in fatal crashes were speeding, with operators aged 25-34 being the most affected.

6. Demographics

- Male motorcyclists accounted for 92% of crashes and 81% of those transported by EMS.
- White, non-Hispanic motorcyclists represented 64% of fatalities, 59% of hospital visits, and 63% of emergency room visits.

7. Seasonal and Timing Analysis

- 32% of fatal crashes occurred in Spring, 31% in Summer, with an increase during weekend nights (31% of fatal crashes).
- 56% of fatal crashes occurred during daylight, with a significant number happening at night.

8. Manner of Collision

- Angle crashes were the most common in multi-vehicle incidents, making up 58% of fatal crashes.
- Rear-end collisions accounted for 20%, and head-on collisions made up 9%.

9. Crash Locations

- The Atlanta Region accounted for 38% of all motorcycle crashes, with a crash rate of 2,234.2 per 100,000 registrations.
- Bibb County had the highest serious injury and fatal crash rates, with 4,928.1 per 100,000 registrations.

10. Economic Impact

- The total cost of motorcycle-related hospitalizations and ER visits in Georgia was \$252 million in 2021.
- Hospitalizations increased by 121%, and ER visits by 30%.

- Helmet use saved an estimated \$116 million in economic costs.

2022 Georgia Motorcycle Accident Report Summary

1. Overall Statistics

- In 2022, Georgia recorded 1,829 motor vehicle traffic fatalities, a 2% increase from the 1,797 reported in 2021, marking the highest number since 1994.
- The fatality rate per 100 million vehicle miles traveled (VMT) rose from 1.49 in 2021 to 1.54 in 2022, indicating increased risk per mile traveled.
- Motorcyclist fatalities significantly contributed to this rise, reflecting broader safety challenges.
- Total Crash Count for All motorcycle Crashes in 2022 was reported as 4,134 slightly above 4085 that was reported in 2021.

2. Fatalities Increase

- Motorcyclist fatalities rose by 17%, from 185 in 2021 to 224 in 2022.
- Un-helmeted motorcyclist fatalities increased by 21%, with 17 fatalities in 2022, up from 14 in 2021.
- This rise occurred despite efforts to improve safety, underscoring persistent risks.

3. Contributing Factors

- Speeding and lack of helmet use were key factors in motorcycle fatalities.
- Distracted and aggressive driving also contributed to the rise in fatalities, especially among motorcyclists.
- The severity of crashes increased, even as total police-reported crashes slightly decreased by 1%.

4. Single Vehicle Crashes

- Single-vehicle crashes remained a significant portion of motorcycle accidents, often due to loss of control or collisions with stationary objects.
- These crashes highlight the need for better riding skills and control.

5. Speeding Statistics

- Speeding was involved in a significant percentage of fatal motorcycle crashes, consistent with previous years.
- 18% of motorcycle operators involved in fatal crashes were speeding, particularly younger motorcyclists.

6. Demographics

- Motorcyclists aged 25-34 years accounted for the highest fatalities and serious injuries.
- Male motorcyclists continued to dominate crash statistics, reflecting trends from previous years.

7. Seasonal and Timing Analysis

- Crashes were more frequent during Spring and Summer, with increased incidents during weekend nights.
- 30% of fatalities occurred during weekend nighttime, indicating higher risks during these periods.

8. Manner of Collision

- Angle crashes, particularly at intersections, were the most common type of collision.
- 63% of motorcyclist fatalities occurred in multi-vehicle crashes, often due to visibility issues or failure to yield.

9. Crash Locations

- The Atlanta region accounted for 42% of motorcycle crashes, with high rates in both urban and rural areas.
- The highest crash rates were in areas with dense traffic, such as metro-Atlanta.

10. Economic Impact

- The economic impact of motorcycle-related hospitalizations and ER visits exceeded \$230 million.
- Hospitalizations increased by 10% from 848 in 2021 to 933 in 2022.
- The increase in unhelmeted fatalities added to the economic burden.

11. Year-to-Year Comparisons

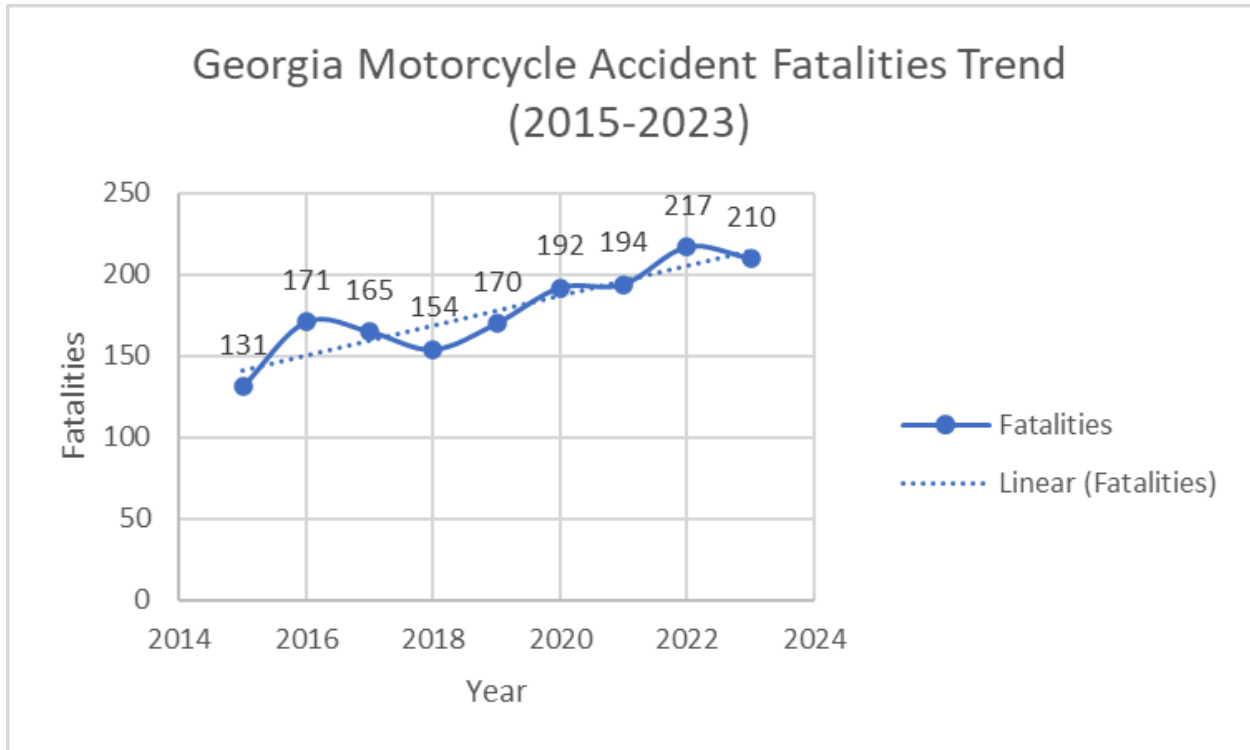
- From 2021 to 2022, motorcyclist fatalities increased by 17%, with serious injuries up by 10%.
- The fatality rate per 100 million VMT continued to rise, reflecting broader traffic safety challenges in Georgia.
- The consistent rise in fatalities since 2019 highlights a troubling trend, with 2022 being one of the deadliest years for motorcyclists in the state.

2023 Georgia Preliminary Motorcycle Accident Report Summary

- Total Crash Count for All Filtered Crashes: 4,162

- Fatal Crash Count for All Filtered Crashes: 203
- Number of Injuries for All Filtered Crashes: 3,398
- Number of Fatalities for All Filtered Crashes: 210

Summary of Georgia Motorcycle Accident Report



Total Number of Crashes (2015-2023)

- **2015:** 3,122 crashes
- **2016:** 3,051 crashes
- **2017:** 3,049 crashes
- **2018:** 3,948 crashes
- **2019:** 3,786 crashes
- **2020:** 4,085 crashes
- **2021:** 4,134 crashes
- **2022:** 4,162 crashes
- **2023 (Preliminary):** 4,162 crashes

Total Crashes (2015-2023): 33,499 crashes

Total Number of Fatalities (2015-2023)

- **2015:** 131 fatalities
- **2016:** 171 fatalities

- **2017:** 165 fatalities
- **2018:** 154 fatalities
- **2019:** 170 fatalities
- **2020:** 192 fatalities
- **2021:** 194 fatalities
- **2022:** 217 fatalities
- **2023 (Preliminary):** 210 fatalities

Total Fatalities (2015-2023): 1,604 fatalities

Year-to-Year Trends (2015-2023)

- **2015 to 2016:** 1.7% decrease in crashes but a 30.5% increase in fatalities.
- **2016 to 2017:** 2.3% decrease in crashes and 3.5% decrease in fatalities.
- **2017 to 2018:** 0.1% decrease in crashes and 6.7% decrease in fatalities.
- **2018 to 2019:** 29.5% increase in crashes and 10.4% increase in fatalities.
- **2019 to 2020:** 4.1% decrease in crashes but a 12.9% increase in fatalities.
- **2020 to 2021:** 8% increase in crashes and 1% increase in fatalities.
- **2021 to 2022:** 1.2% increase in crashes and 11.9% increase in fatalities.
- **2022 to 2023:** Preliminary data shows no change in crashes but a 3.2% decrease in fatalities.

Key Statistics and Insights

- **Fatality Rates:** The fatality rate per 100,000 motorcycle registrations has fluctuated over the years, peaking in 2020 at 92.8 before slightly decreasing to 91.2 in 2021.
- **Contributing Factors:** Speeding, loss of control, and lack of helmet use have been consistent contributors to fatal crashes.
- **Economic Impact:** The economic burden of motorcycle-related hospitalizations and emergency room visits has increased, reaching \$252 million in 2021, the highest during the period.

Additional Observations

- **Demographics:** Male motorcyclists, particularly those aged 25-34, are the most affected group in terms of crashes and fatalities.
- **Seasonal Trends:** The majority of crashes occur during the warmer months, with an increase in incidents during weekends and at night, reflecting higher risks during leisure activities.
- **Crash Locations:** The Atlanta region consistently records the highest number of crashes, with rural areas showing higher crash rates per registration.

Contact Our Atlanta Motorcycle Accident Lawyer

If you've been injured in a motorcycle accident in Georgia, don't wait to claim what you deserve. Contact our [Atlanta motorcycle accident lawyer](#) today to secure the compensation you need for your medical bills, lost wages, and pain and suffering. With Over a decade of experience in personal injury law, [Matt Wetherington](#) will guide you with compassion and help you understand your options.

We understand the complexities of your motorcycle accident claims and are committed to fighting for your rights every step of the way. [Call us](#) now for a free consultation, and let us help you on your road to recovery. Your fight is our fight, and we're here to ensure you receive the justice and support you need.

References

1. <https://crashstats.nhtsa.dot.gov/Api/Public/ViewPublication/813589>
2. <https://www.gahighwaysafety.org/wp-content/uploads/2023/06/2021-Motorcycles-Georgia-Traffic-Safety-Facts.pdf>
3. <https://www.gahighwaysafety.org/wp-content/uploads/2022/02/2019-overview-of-motor-vehicle-crashes-georgia-traffic-safety-facts.pdf>
4. <https://www.dressielaw.com/motorcycle-accident-statistics-and-trends-in-georgia/>
5. <https://dds.georgia.gov/press-releases/2021-09-09/motorcycle-fact-sheet>
6. https://www.ghsa.org/sites/default/files/2016-12/motorcycles_2015.pdf
7. <https://www.dot.ga.gov/GDOT/Pages/CrashReporting.aspx>
8. <https://gdot.aashtowaresafety.net/crash-data#/>